



# Beluga Rotterdam | EuroTug 3010

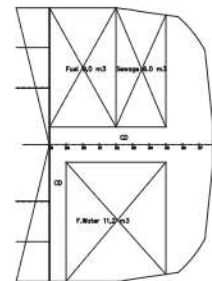
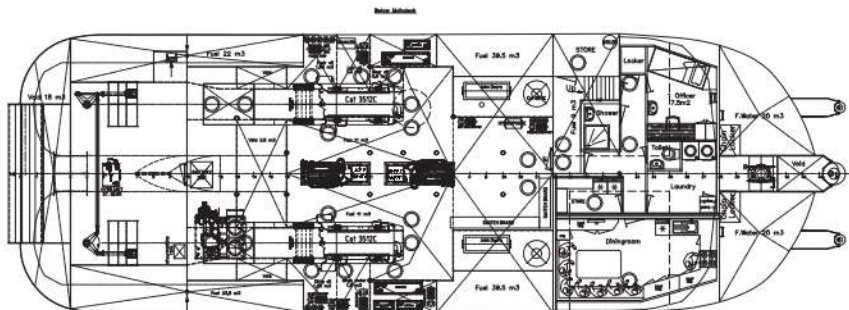
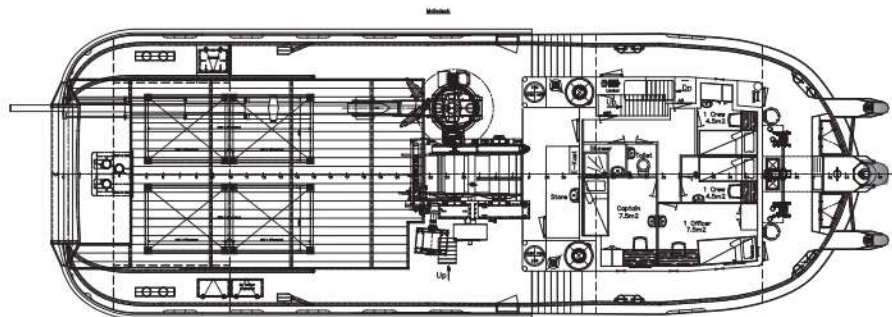
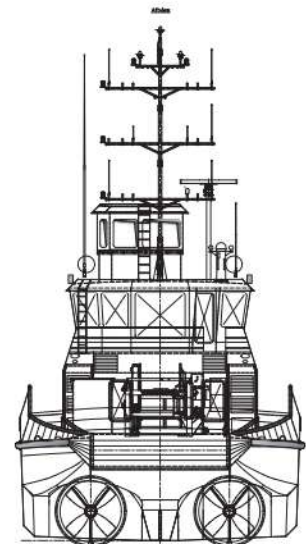
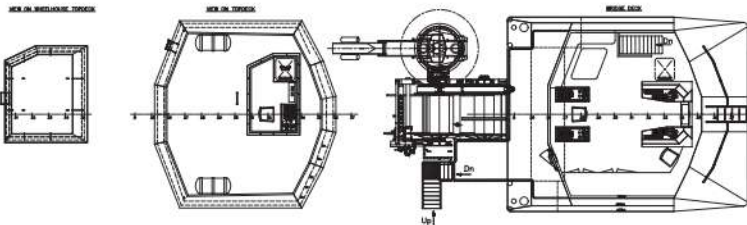
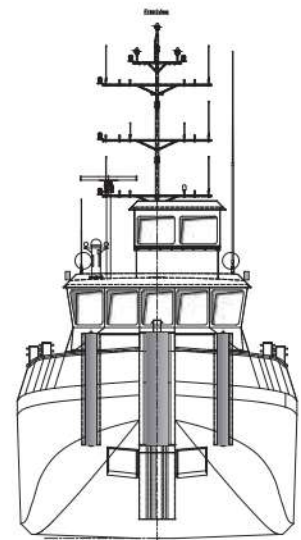
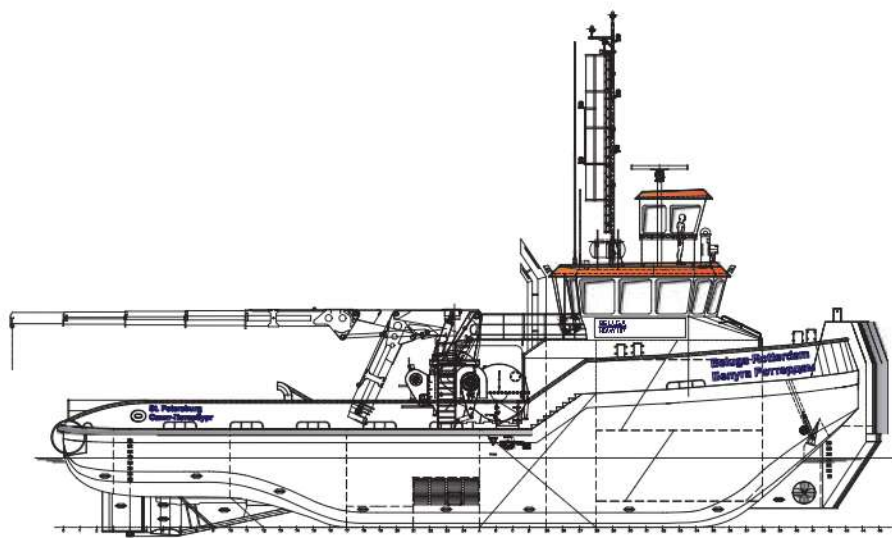
**BELUGA**  
HEAVY LIFT

Euro Tugs have proven their versatility and robustness at sea, over the years. The maximum free deck space for this type of multipurpose tugboat offers many possibilities for all kinds of operations including towing, anchor handling, dredging support and wind farm support.



<b>BUILDER</b>	Neptune Marine (NL)
<b>YEAR OF BUILD</b>	2019
<b>CLASSIFICATION</b>	Bureau Veritas I ✕ HULL • MACH • AUT-UMS, TUG, Unrestricted Navigation, Ice Class 1B, GMDSS Area A3
<b>DIMENSIONS</b>	
LENGTH O.A.	30,00 meters
BREADTH MLD.	10,00 meters
DEPTH AT SIDE	3,55 meters
DRAFT	3,00 meters
GROSS TONNAGE	294 Tons
NET TONNAGE	88 Tons
<b>PERFORMANCES</b>	
SPEED	10 knots
BOLLARD PULL	43+ Tons
<b>PROPULSION</b>	
MAIN ENGINES	2x Caterpillar 3512C
TOTAL POWER	2388 kW at 1600 RPM
PROPELLERS	2200mm in nozzle
<b>AUXILIARIES</b>	
GENERATOR SETS	2x John Deere
TOTAL E-POWER	656 kVA

HYDRAULIC POWERPACK	2x 90 kW
BOW THRUSTER	200 kW (electric driven)
<b>TANKS</b>	
FUEL OIL	150 m <sup>3</sup>
FRESH WATER	51 m <sup>3</sup>
<b>DECK LAY-OUT</b>	
ANCHOR HANDLING / TOWING WINCH	Waterfall winch type
ANCHOR HANDLING	125 tons holding force
PULLING FORCE	100 tons at 1 <sup>st</sup> layer
HAULING SPEED	up to 10 m/min
TOWING	125 ton holding force
PULLING FORCE	50 ton at 1 <sup>st</sup> layer
HAULING SPEED	up to 20 m/min
TUGGER WINCH	20 ton at 1 <sup>st</sup> layer
DECK CRANE	Heila HLRM 170-4S
DECK	Azobé deck covering
TOWING HOOK	Mampaey 45 tonnes SWL Disc
FENDERING	Tire fendering on the side, 3x pushbow fendering fore ship, D-fendering aft ship
TOWING PINS	Aft ship set + chain stopper
<b>ACCOMMODATION</b>	
FACILITIES	Airconditioned accommodation for up to 10 persons



## Beluga Rotterdam | EuroTug 3010

For more information, please contact us on:

T +31 (0)10 268 0316 E [rotterdam@beluga-heavylift.com](mailto:rotterdam@beluga-heavylift.com) W [www.beluga-heavylift.com](http://www.beluga-heavylift.com)

Version: V.01

No liability for the accuracy of the information provided

**BELUGA**  
HEAVY LIFT

 **Neptune**